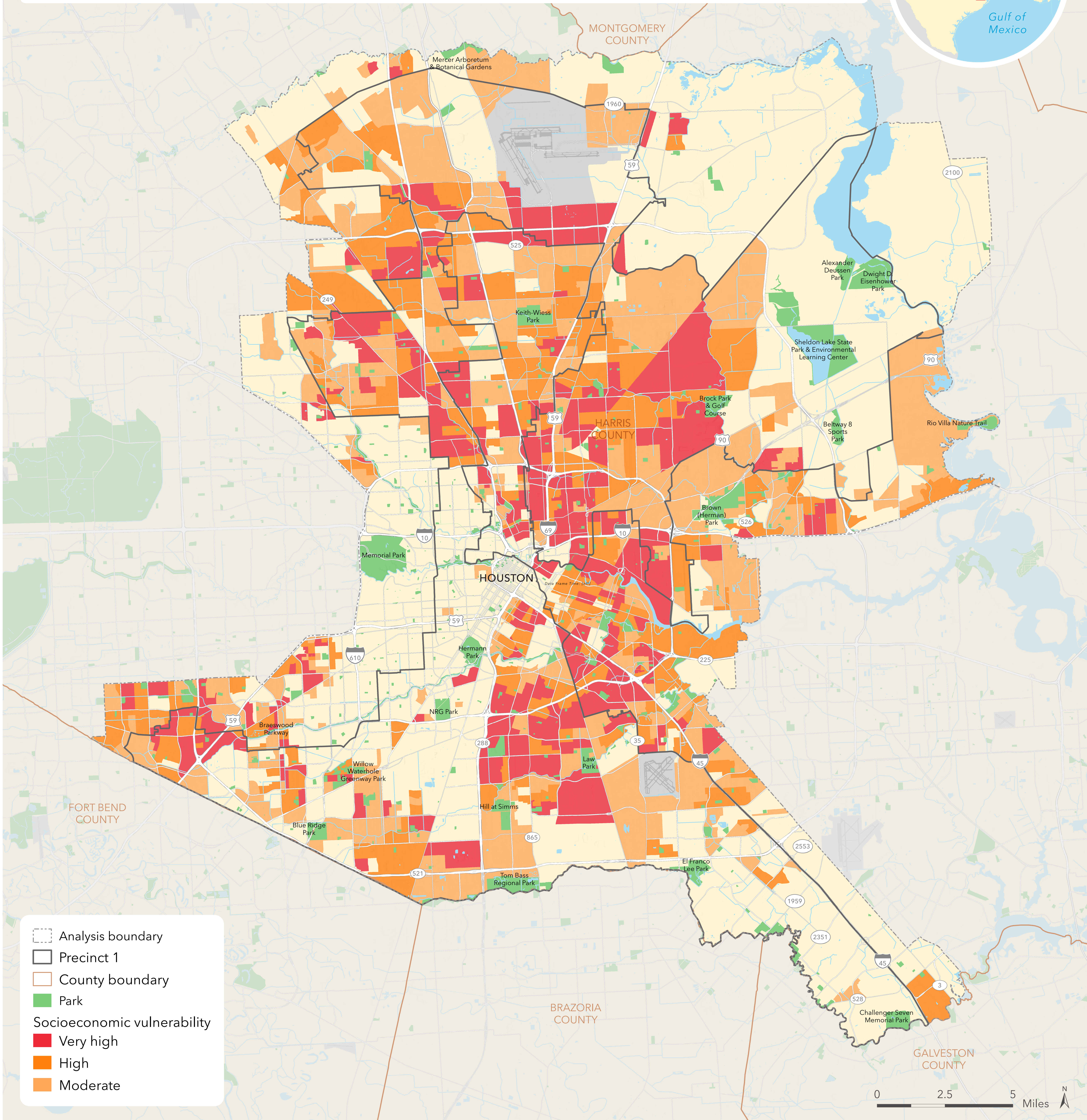


Socioeconomic vulnerability has broad implications for a community's park access and need. Communities facing high socioeconomic vulnerability may have the greatest need for the services provided by parks, and the most limited ability to travel long distances to access these services or to pay to use private recreational facilities. This map shows the results of the socioeconomic vulnerability mapping analysis for Park-Smart Precinct 1. Thirteen indicators are included in this index: low income households, linguistic isolation, less than high school education, children under 5, seniors over 64, disabled population, households without cars, minority populations, rent burden, seniors living alone, households receiving SNAP benefits, unemployment, and population density. These indicators were weighted by an advisory team and wrapped up to form this final result.



Socioeconomic vulnerability

PARK-SMART PRECINCT 1, HARRIS COUNTY

September 11, 2018. Parks data provided by ParkServe™. Copyright © The Trust for Public Land. The Trust for Public Land and The Trust for Public Land logo are federally registered marks of The Trust for Public Land. Information on this map is provided for purposes of discussion and visualization only. www.tpl.org

