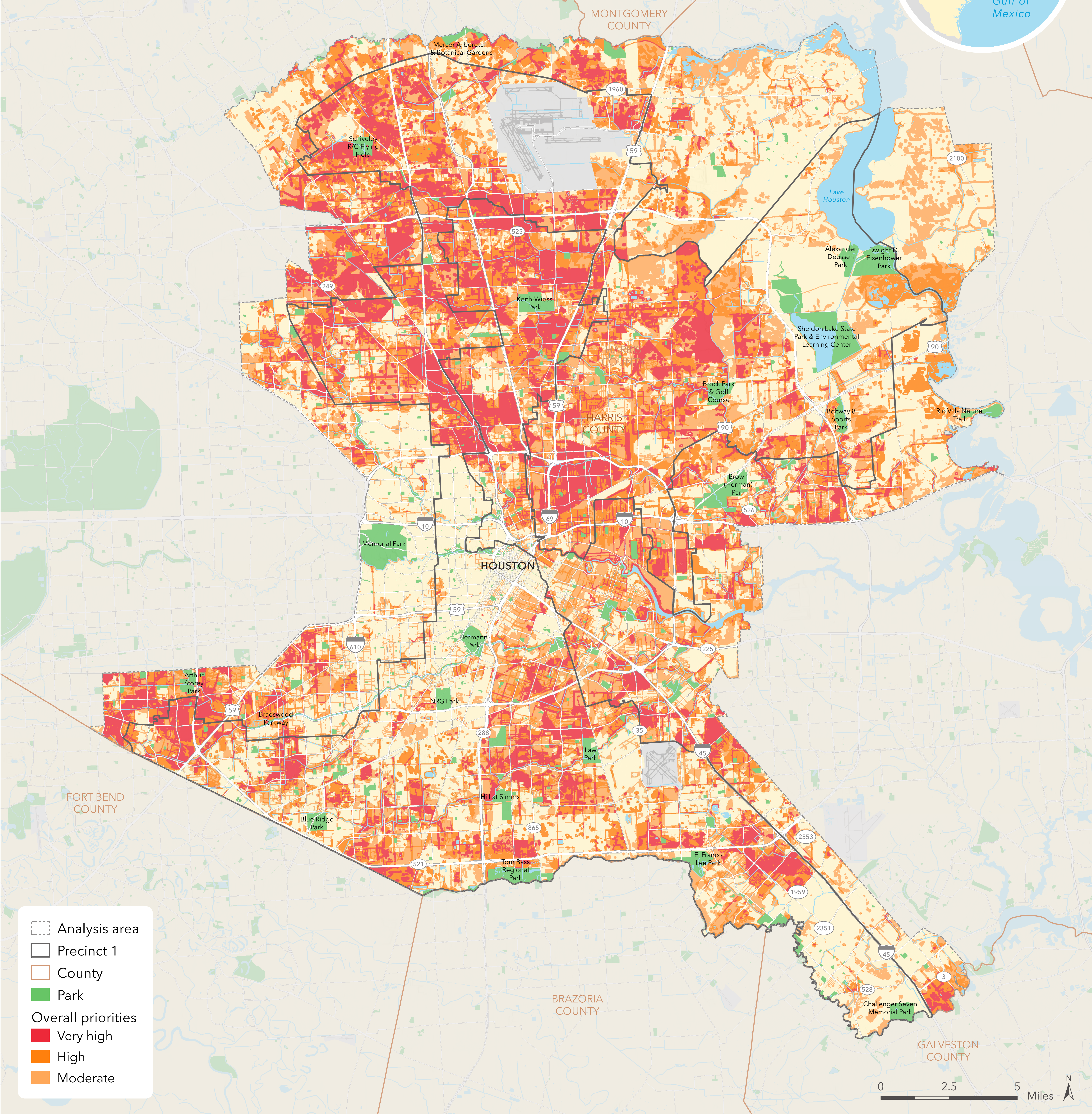


The Park-Smart Precinct 1 overall priority result shows where parks, open space, and trails can have multiple benefits for the community. This analysis result was created with the help of a Technical Advisory Team which was comprised of experts across each of our mapping topics. The six mapping topic results were weighted and stacked based on the input of our Technical Advisory Team.

- |  |  |
|--|--|
| 1. Socioeconomic vulnerability (18.5%) | 4. Trails and active transportation (14.8%)  |
| 2. Level of park need (18.5%)          | 5. Community health (14.8%)                  |
| 3. Flooding and water quality (18.5%)  | 6. Heat islands and poor air quality (14.8%) |



- Analysis area
- Precinct 1
- County
- Park
- Overall priorities
  - Very high
  - High
  - Moderate

# Overall priorities

## PARK-SMART PRECINCT 1, HARRIS COUNTY

October 5, 2018. Copyright © The Trust for Public Land. The Trust for Public Land and The Trust for Public Land logo are federally registered marks of The Trust for Public Land. Parks data provided by ParkServe®. Information on this map is provided for purposes of discussion and visualization only. [www.tpl.org](http://www.tpl.org)

