

# Land and Water Conservation Fund (LWCF) Past Projects map: **USER GUIDE**

(updated January 2023)

The Land and Water Conservation Fund (LWCF) [digital map website](#) is available to the public and includes two web-based/interactive maps. The [Past Projects](#) map allows users to view locations of LWCF investments over the program's 55-plus year history, and the [Future Projects](#) map shows proposed projects currently in need of LWCF funding. **This user guide will walk you through how you can use the tools within the [Past Projects](#) map** (shown below). **Note:** The "Future Projects" map is simpler and does not have the more in-depth tools that the Past Projects map has.



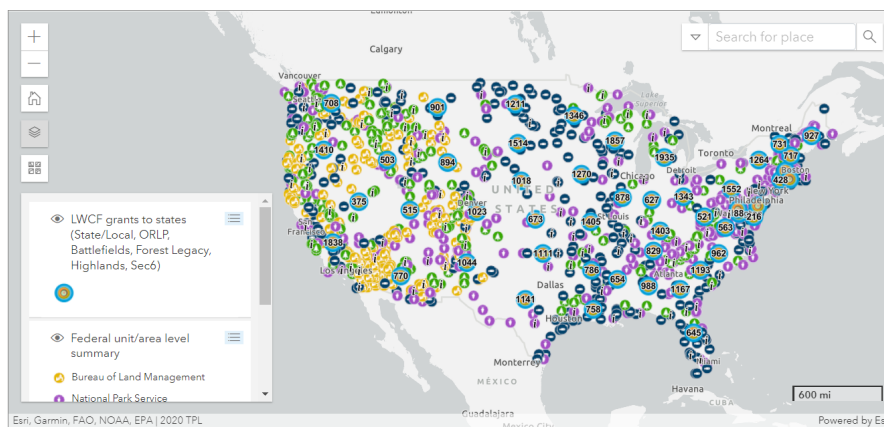
The Land and Water Conservation Fund  
PROTECTING THE PLACES THAT MATTER TO YOU

Home Maps ▾ More info ▾ Contact us

## Past projects

▼ Map information/help (click to expand or collapse)

- The more you zoom in on the map, the more LWCF-funded places you will see
- Points with **i** symbols have additional information/stories
- For more information about LWCF's specific programs, see the [LWCF programs](#) page
- The LWCF-funded places data are up-to-date at least through April 2020, see the [About the data](#) page for more information.
- Do you see anything missing or in the wrong location? Use the [Contact us](#) page to let us know.



## Table of contents:

<b>Past Projects map background</b>	<b>3</b>
<b>Open and get to know the Past Projects map</b>	<b>3</b>
<b>Use the Past Projects map filter and reporting tools</b>	<b>6</b>
<b>How can the map and its tools be useful?</b>	<b>7</b>
<b>How to contact us</b>	<b>7</b>

## Past Projects map background

History of the Past Projects map: <https://lwcf.tplgis.org/about/history/>

Learn about LWCF programs: <https://lwcf.tplgis.org/about/lwcf-programs/>

About the data: <https://lwcf.tplgis.org/about/data/>

---

## Open and get to know the Past Projects map

### Accessing the Past Projects Map

The LWCF Past Projects map can be accessed from <https://lwcf.tplgis.org/>, either from the bottom of the homepage or from the menu/navigation bar near the top of the homepage (**Maps<Past projects**).

The default view of the map shows two types of summary information only:

- Summary points for **LWCF grants to states** (the bigger points at the center of each state; these large points have the **state grant** project totals in the center of them [these totals exclude projects funded through federal LWCF programs])



- Summary points of many federal units that have received funding through LWCF

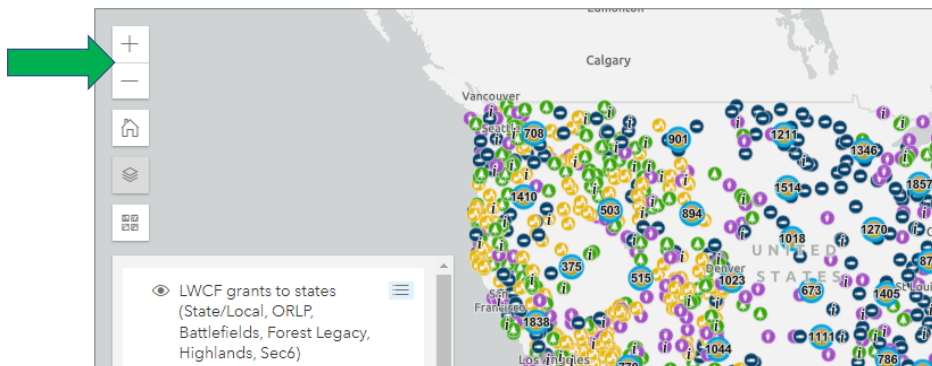


### Navigating the map

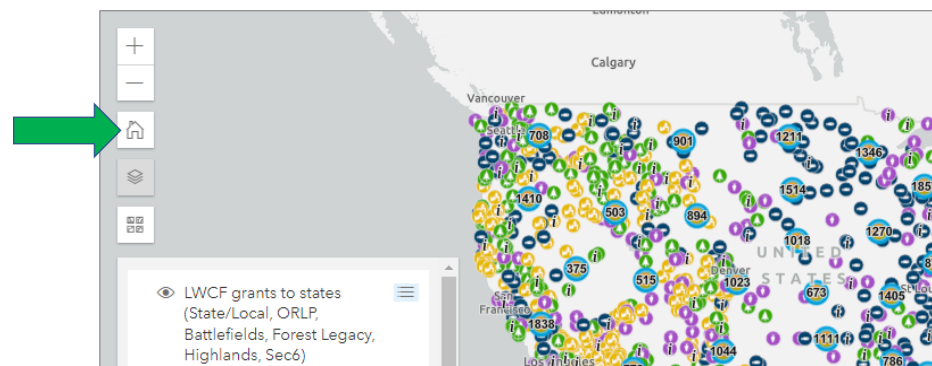
#### Zooming

You can zoom in or out by using the +/- buttons in the upper left corner of the map, by using the scroll wheel on your mouse, or by pressing the shift key while drawing a box on the map around the desired area with your mouse. Zoom in to see an area

where you already know about an LWCF-funded area or site, or any area of interest. The contents of the map will change (to show more detail) the more you zoom in.

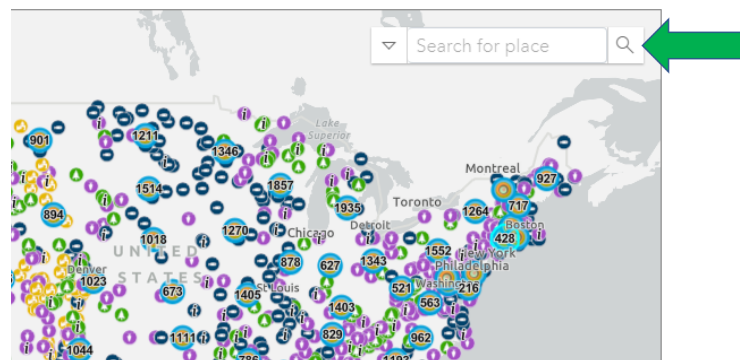


Click the “home” button to quickly zoom out to the default/national/lower 48 view of the map.



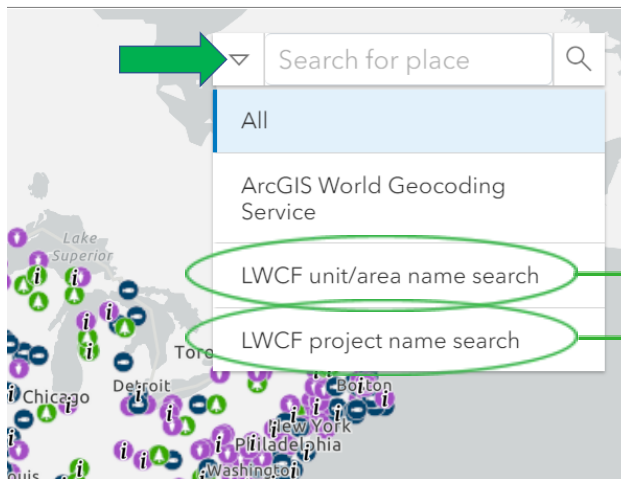
### Search for a place or project

Use the search bar in the upper right corner of the map to search for general geographies or places (e.g. states, cities, etc.), federal unit name (ex. Zion National Park), or project name.



As you type in a search term options will appear - scroll down to see all the results from the ArcGIS World Geocoding Service (those results show first in the list), and

further down to see any results from the LWCF-funded federal units and projects databases. **If you want to only search one of the LWCF funding location databases** you can select one of those from the arrow dropdown:



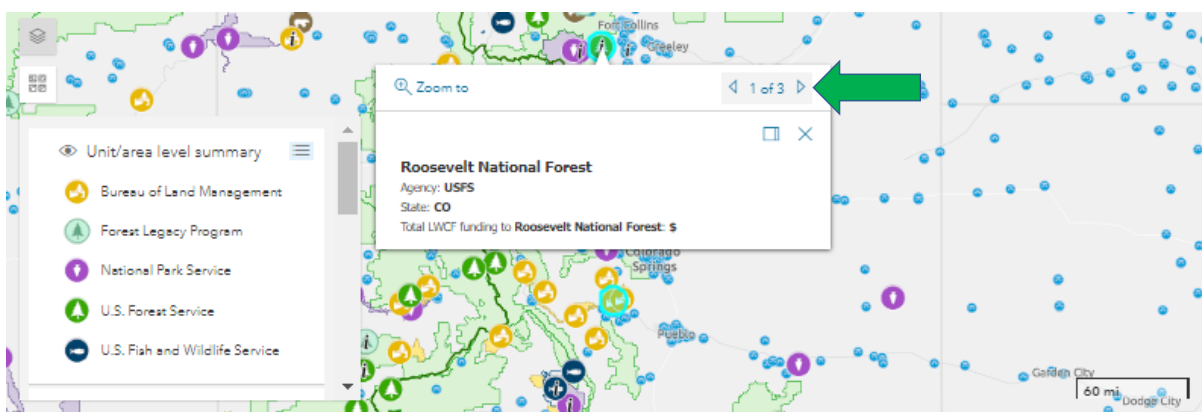
These are federal unit **areas** (such as the overall boundary of a national park or national forest) or Forest Legacy Program project areas.

These are specific **project sites**, such as a tract/parcel within a national forest, or a local/city park.

The searches of the LWCF unit/area names and LWCF project names are only as accurate as the unit/area/project names in the database. If you find or suspect that a unit/area/project isn't named or spelled correctly in the database please use our [Contact Us form](#) to let us know.

### Using the map to explore unit, area, or project-specific information

Clicking a point or area on the map will open a pop-up with basic information on that project or unit/area. **Many locations on the map have many overlapping projects or units**; you can toggle between the pop-up information for those overlapping sites by using the left and right arrows on the right side of the pop-up, when applicable.



### “More Information” about LWCF-funded places (stories and photos)

The lowercase “i” on some points indicates that there is a written description and

photograph for that project; by clicking on points that have this “i” that written description and photograph will appear at the bottom of the page (under the “Unit or project descriptions and photos” section). Federal boundaries/areas might also contain descriptions and photos. There are currently approximately 550 projects or unit summaries with this level of information.

## Use the Past Projects map filter and reporting tools

### Filtering to change the map and/or create project reports

The content shown on the map can be changed, and project reports (PDF maps and Excel files) can be generated, from the “Project filters and reports” section located immediately below the map. Clicking the bar expands or contracts that section. You can filter by state, county, congressional district, or LWCF program, or any combination of these, although **selecting a state from the Select state dropdown is required while filtering**. You can also export a PDF map or an Excel file with information on the subset of filtered projects.

▼ Project filters and reports (click to expand or collapse)

A state must be selected to select a county or congressional district. PDF reports can be created on a state, county or congressional district and can include Program or have a Program alone.

Select state (required) Select county Select congressional district Generate reports

None Selected None Selected None Selected Export

Records can be filtered by program alone or in combination with any of the other filters (you may have to zoom in the see the results of the program filter).

Program # of records Filter

None Selected 0 Clear

After clicking the “Generate reports” button the reports will take a minute to generate, after which you can choose to download (by clicking on) the PDF and/or the Excel file:

▼ Project filters and reports (click to expand or collapse)

A state must be selected to select a county or congressional district. PD or congressional district and can include Program or have a Program al

Download: PDF XLSX

Select state (required) Select county Select congressional district

None Selected None Selected None Selected

**NOTE:** The Excel exports include all individual records in the database for six out of the ten programs. For the other four programs (BLM, NPS, USFWS, and USFS), the Excel exports include summary information **by federal unit** (for example, a whole national forest or national park).

The data (including funding estimates) shown in the PDF maps and Excel exports represent the best currently available information and in some cases may be incomplete or inaccurate. See more in our [Caveats/Known Issues](#) section of the website.

---

## How can the map and its tools be useful?

One way is to show them to congressional offices – every district has received LWCF funding! Feedback so far is that this helps members in a variety of ways – identifying places to host an event, seeing the history, more places to highlight in statements and publications, etc.

Show to your funders. Highlight your projects! Send us suggested stories to tell.

Use the [Future Projects](#) map to find funding opportunities in your geography.

---

## How to contact us

Give general feedback, ask questions, help us identify errors, and share your stories about how the LWCF has impacted you. <https://lwcf.tplgis.org/contact/>.