

UPPER WENATCHEE COMMUNITY LANDS PLAN

TRAINING GUIDE

TABLE OF CONTENTS

GETTING THERE

- Web link
- Password protected site

THE BASIC MOVES

- Change the viewer extent
- Change the map background
- Additional map layers
- Information on specific features
- Add graphics to your map
- Print a custom map
- Google Street View
- Get help and access metadata

UPPER WENATCHEE COMMUNITY LANDS PLAN

- Map analysis results
 - Display parcels and run reports
 - Group parcel selection
 - Query data
 - Example of Parcel Profile Report
-

GETTING THERE

- Web link
 - Use the following link to connect to the Wenatchee Community Lands Plan project introduction page:
 - http://web.tplgis.org/Wenatchee_CL/
 - **Note: Mozilla Firefox works best for this mapping site. Internet Explorer version 7 or higher also works well.**
 - **Note: This mapping site is data intensive**

THE TRUST FOR PUBLIC LAND | **CHELAN-DOUGLAS LAND TRUST** | **Chelan County**

Upper Wenatchee Community Lands Plan

Community Lands Planning

Welcome to the Upper Wenatchee Community Lands Plan.


Overview:

The Trust for Public Land worked with the Chelan-Douglas Land Trust and Chelan County Department of Natural Resources to coordinate the Upper Wenatchee Community Lands Plan. The objectives of the Plan are to identify the values associated with the Upper Wenatchee watershed landscapes; to create community awareness of those values; to map lands that exemplify the values; and develop an action plan outlining voluntary actions to help ensure that these lands and the values attached to them serve our communities for generations to come. The vision articulated in the Community Lands Plan can guide future investments by public and private property owners and potentially lead to land management that will benefit local communities.

In order to identify the values that are important to the community, public meetings were held in three subareas within the watershed which included the Peshastin-Blewett subarea, the Chumstick Valley subarea and the Nason subarea. In addition to the community meetings, an online and print poll was distributed to obtain additional feedback to help drive the process and values of the Plan. These forums help ensure that the Plan is a reflection of the values held by the community.

Through the use of GIS modeling, landscape priorities were identified for working lands, wildlife and natural resources and recreation. These landscape priorities will help guide future investments in parks and open space, trails and community forests to assist in planning for growth and the threats of significant forest fires, while retaining the natural resources that are at the center of the Upper Wenatchee area's desirability as a place to live, work and recreate.

Upper Wenatchee:



A web portal that delivers the results from the Upper Wenatchee Community Lands Plan analysis. The site includes an interactive map viewer that allows you to view and / or investigate the results from the analysis as well as create reports for individual parcels.

THE TRUST FOR PUBLIC LAND | The Trust for Public Land is an IRS approved 501(c)(3) tax-exempt organization. All donations are tax deductible to the extent provided by law. Our Federal Identification Number (EIN) is 23-7222333. | Privacy Policy | Legal Disclosure | Terms of Use

Copyright © 2016 The Trust for Public Land

- In order to access the data viewer and project query tool, click on the map image at the bottom of the introductory page.
- Password protected site
 - A popup will open that will require a username and a password in order to continue.

- Contact Mitchel Hannon at The Trust for Public Land, Geographic Information Systems team (mitchel.hannon@tpl.org) for permission to use the password protected mapping site.

Upper Wenatchee Login

To gain access to this application contact:
GIS Support at The Trust for Public Land

Enter your user name and password to log in.

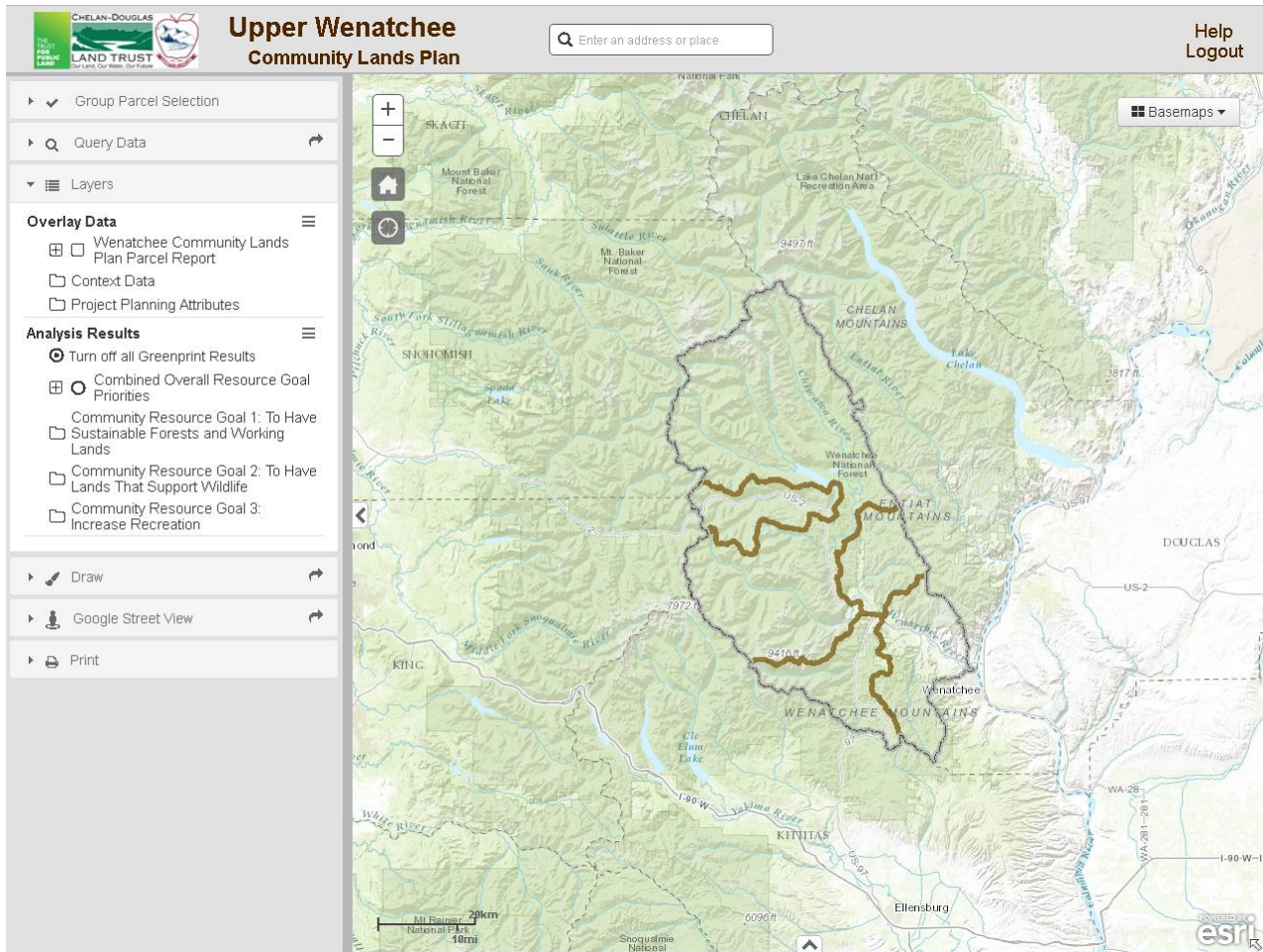
User name:

Password:



Remember my login

• [Contact TPL GIS Support](#)







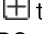
- Once username and password have been accepted, the user will be taken to the Wenatchee Community Lands Plan data viewer and project query tool:

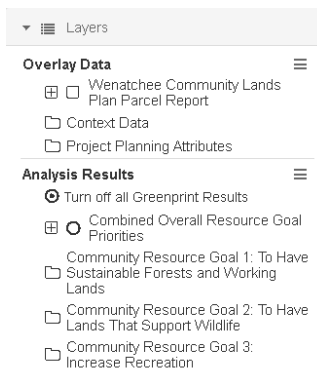



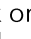
THE BASIC MOVES

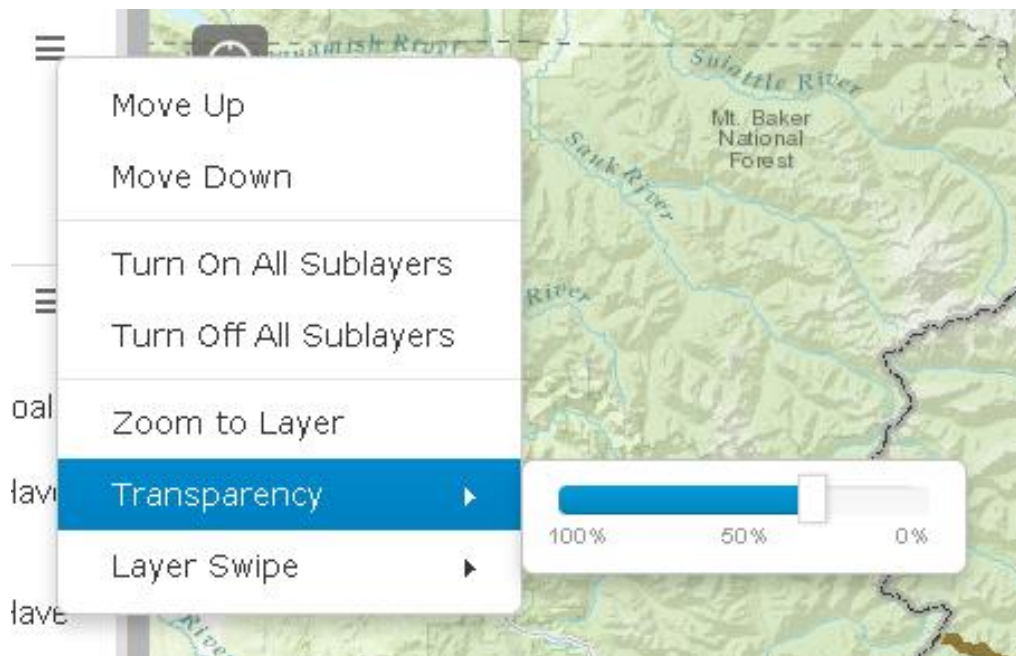
- Change the viewer extent
 - Click the (+) sign to zoom in.
 - Click the (-) to zoom out
 - To zoom in to a particular area hold down shift, click your mouse on one corner of the desired extent, and drag your mouse to the opposite corner of the desired extent.
 - Click and drag your mouse to the right or left to adjust the view
 - As you change the viewer extent the map detail changes. As you zoom in the map becomes more detailed.
 - Click the  button to return to the original extent.
 - Click the  button to show your location on the map





- Change the map background
 - Click the  Basemaps tab to the left of the map.
 - A drop down panel will appear. Click the small box next to the basemap you desire. Feel free to experiment with different basemaps. Note that you can close this panel at any time by clicking  Basemaps again.
- Additional map layers
 - On the left side panel there are a number of options available. If you click on  Layers you will see all the layers in the viewer. These layers are categorized.
 - At the top of the layers list there is an option to turn off all results layers. If at any point you would like to remove all the results from the map click this button .
 - Each  symbol indicates that there are multiple layers grouped under that heading. Click the  to expand and see what layers there are.
 - Click  to show the symbology for an individual layer.
 - On the LAYERS tab, locate the **Overlay Data** section.



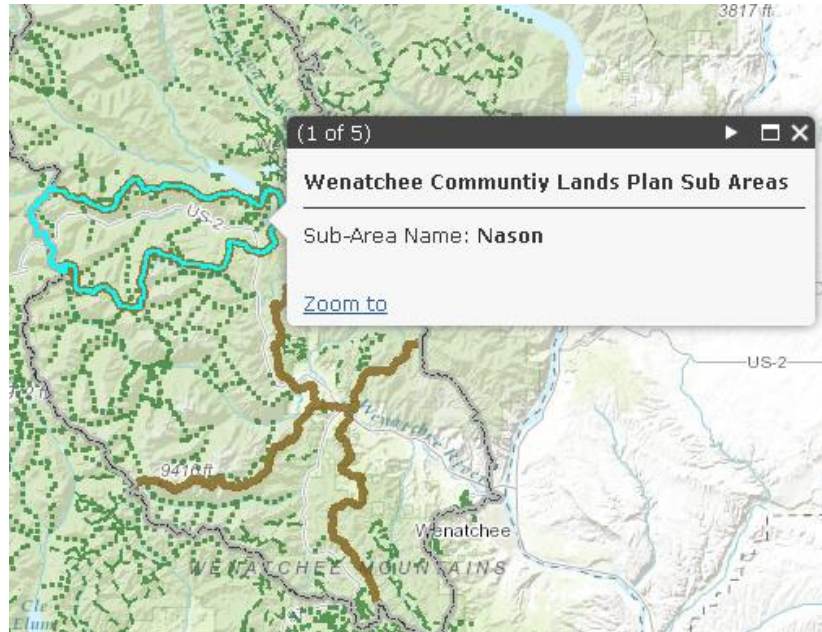
- Click the  to the left of "Context Data" to open this group of overlay data. You will see that there is a checkmark in the box next to "Wenatchee Community Lands Plan Study Area" and the "Wenatchee Community Lands Plan Sub Areas". Click the box next to "Wenatchee Community Lands Plan Sub Areas" and the checkmark will disappear. You will also notice that the corresponding layers on the map will no longer be visible.
- Click the box again to re- add this data to your map.
- Click on the  to use the Transparency slider to change the transparency of the overlay data so that you can see mapped features underneath the overlay data. Click the rectangular tab on the slider and hold the mouse down to drag it to the left or right.



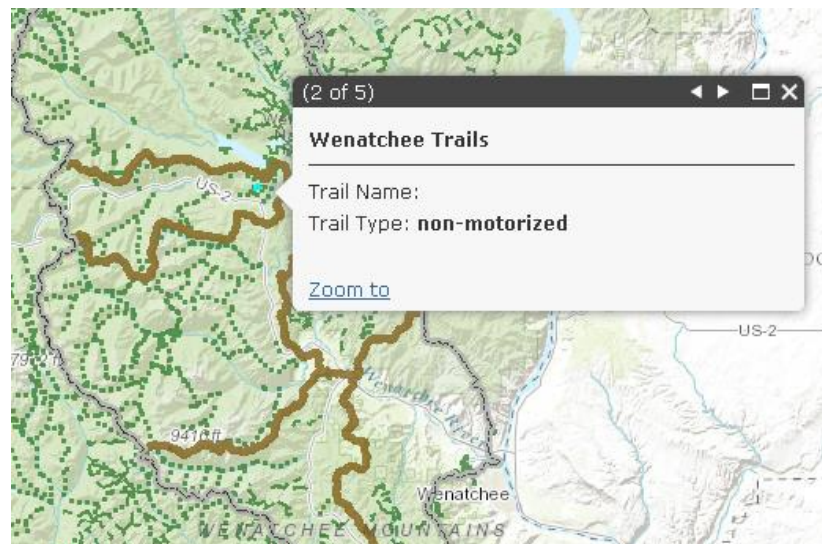
- Experiment with different transparency levels. Notice that the transparency level of all overlay data changes as you change the transparency level.
- In this same drop down menu you can turn on all the overlay layers, turn them all off, zoom to the layers, and layer swipe.
- If you hover your mouse over the Layer Swipe you can either choose vertical or horizontal.
 - A bar will appear in the viewer and you can slide it up/down or right/left depending on if you selected vertical or horizontal. Sliding this bar will show you what the map looks like with or without the overlay data.
- Click the  to the left of "Context Data" to open this group of overlay data.
- To review the meaning of the colors and symbols displayed on your map at any time, click the  button next to the layer name. This will show you the symbology for that layer.



- Information about specific features
 - Turn on the “Wenatchee Trails” layer under the “Context Data” group (switch back to the Overlay Data tab, and turn layer on if necessary).
 - Click a trail on the map.
 - An information box will appear that describes the feature(s) that you clicked.

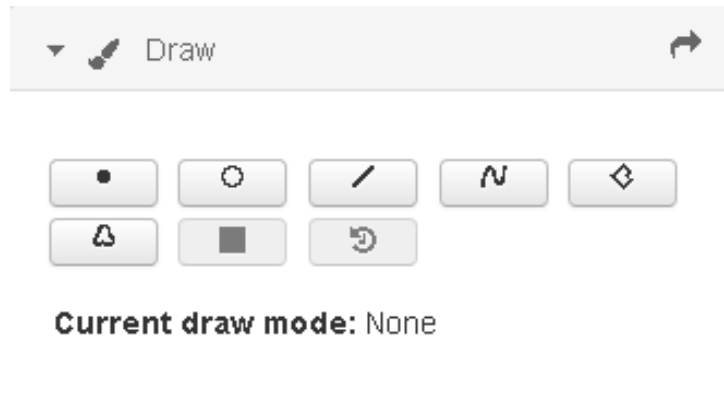



- **Note: If you have multiple layers on the one that is highest in the table of content will be identified first.**
- If there is a ▶ in the info box title you have identified multiple features. Click ▶ to view information on the other selected features.





- **Note: The feature highlighted on the map is the feature being identified in the info box.**

- Add graphics to your map
 - Click the DRAW tab on the left panel to add graphics to your map.





- To sketch a polygon graphic on your map, click the  button.
 - **Note: The draw tool will only create a graphic that can be used to highlight a feature and export the screen image to pdf. The graphic will not be saved once you close your browser, and the graphic does not create a georeferenced GIS shapefile.**
- Begin sketching a shape on your map by clicking on your map. Click your mouse to continue to add vertices for your shape. Double click to finish the sketch.





- You can also add points, lines, circles, and freehand polygons to the map by using the other draw buttons.
- If you want to change the graphics, use the  button, and recreate the graphics using the methods described above.
 - **Note: This action will erase all your drawings**
- To stop drawing click the  button
- Any graphics that you have added to the map will appear on your printable map.

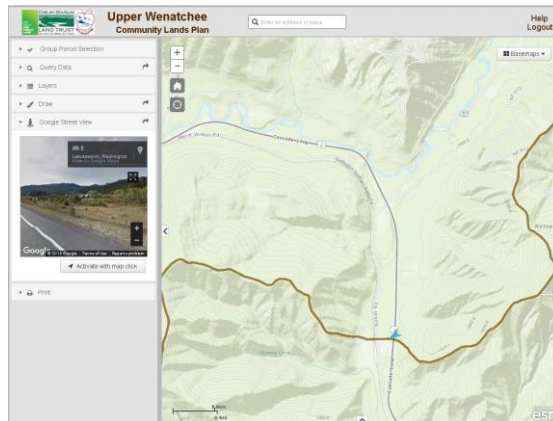
- Print a custom map
 - To print a custom map that reflects the data and zoom level that you have chosen above, click the PRINT tab on the left panel.


- Enter a title for your map in the space provided.
- Choose the format and layout you would like.
- Click  to make other adjustments to your printed map.

- Click the  button once you have completed the above steps.
- Be patient while the mapping site generates a map for you. This process can take up to a minute.
- In the PRINT tab a file will appear once the export is complete. Click on the link to open your map.

- A formatted map will be displayed that you can print or save to your computer hard drive to share with others.
- Close the export window.
- Return to original map
- Click the  button at the top left of your map to reset your map extent, click the  in the layers area, and select "Turn Off All Sublayers".

- Google Street View



- Open the GOOGLE STREET VIEW tab.
- Zoom into an area on the map that you would like to see in Google Street View.
- Click  to see the location you chose on the map.
- Click on the map.



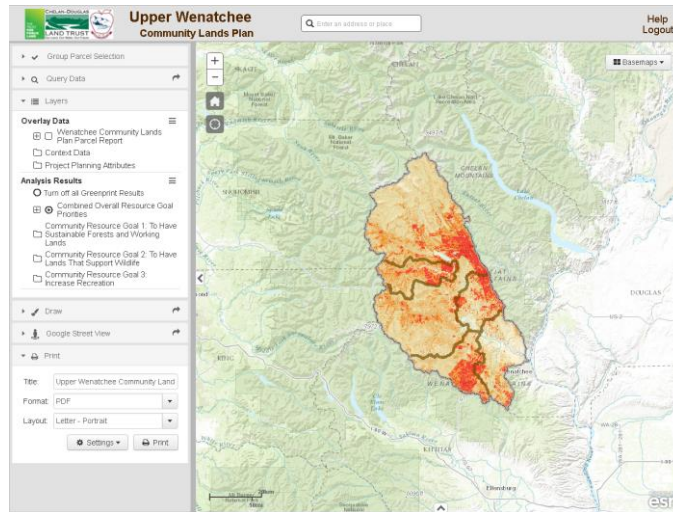
- You can choose other locations to see in Google Street View by clicking on another location on the map.



- Get help and access metadata

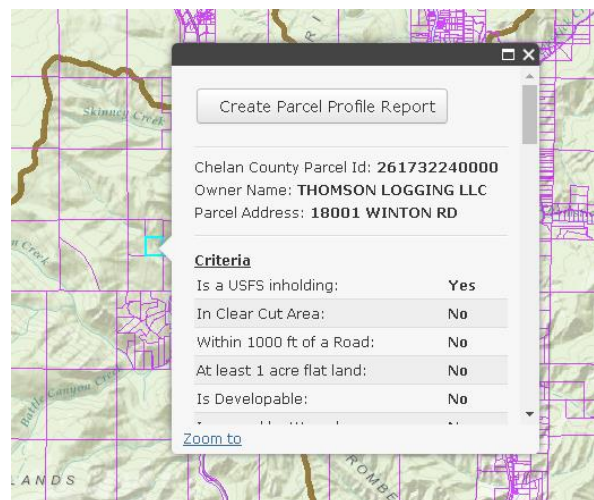
- Click the **Help** button at the top left corner of your map for some simple Navigation shortcuts.
- Still need help? Send an email to mitchel.hannon@tpl.org

UPPER WENATCHEE COMMUNITY LANDS PLAN

- Map analysis results
 - Click the **LAYERS** tab to the left of the map.
 - Find the section labeled **Analysis Results**. These are the layers showing areas that are high priority for the Community Resource Goals.
 - Turn on the “Combined Overall Resource Goal Priorities” to see the areas that best fit the 3 different Community Resource Goals



- Click the  to the left of the section “Community Resource Goal 1” to expand the list of layers under this heading.
- Click the circle next to “Criteria 1: Mixed forest composition” to turn this layer on.
- Click the  next to the layer name for a description of the colors displayed on your map. The darker the red, the higher the priority.
- Display parcels and run reports
 - Turn on any of the “Wenatchee Community Lands Plan Parcel Report” layer that is in the Overlay Data section.
 - Once viewing the parcels, zoom in and click on a parcel to find out characteristics of that parcel and the threats that may be found on that parcel.

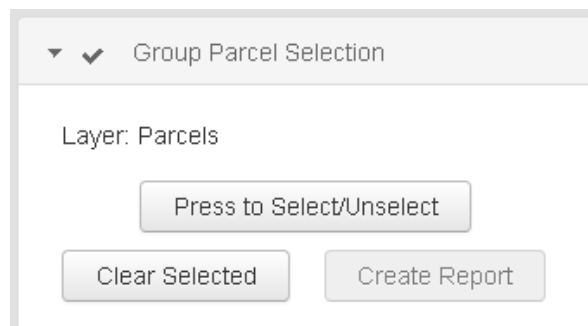


- You can create an exportable Parcel Profile Report on individual parcels by clicking **Create Parcel Profile Report**. A Parcel Profile Report provides a detailed characterization of all modeled priorities and filtering criteria for an individual parcel.
- A download window will open. Click "Download File" to obtain the report.



- **Note: For an example of this report see the last page of this help document.**

- Group Parcel Selection



- To select parcels click the "Press to Select/Unselect" button. Begin clicking on parcels to select them. You can either select an individual parcel or a group of parcels. If you wish to unselect a parcel click it again and the parcel will be removed from the selection.
- You can clear the selected parcels at any point by clicking the "Clear Selected" button.
- You can create a report on any selection of parcels by clicking "Create Report".
- A download window will open. Click "Download File" to obtain the report.
 - **Note: This tool can only accept a maximum of 20 records in each pdf report**



- Query data
 - You can query the Parcels layer to find parcels that meet certain conditions by opening the Query Data tab.

Query Data

Layer: Parcels

By Value **By Location**

Select A Field:
Acres

Logical Operator: \geq Query Value: 20

Add Condition

Query Conditions:

Use And or Or Between Conditions:
 And Or

Run Query Clear Query

- You can clear a query at any point by clicking the **Clear Query** tab.
- Query by Value

Query Data

Layer: Parcels

By Value **By Location**

Select A Field:
Acres

Logical Operator: \geq Query Value: 20

Add Condition

Query Conditions:
X Acres \geq 20

Use And or Or Between Conditions:
 And Or

Run Query Clear Query

- Select the field you would like to query on from the "Select A Field" menu.
- Select the Logical Operator and query value and press **Add Condition**.
- The condition will appear. You can remove a query at any point by clicking **X**.
- After you have added all the desired queries click **Run Query**.
- A table will open at the bottom of the viewer showing you the parcels that fit your query.

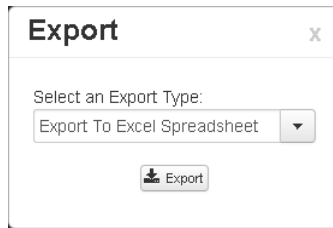
Parcels [x]

Zoom Clear Parcel Report Export

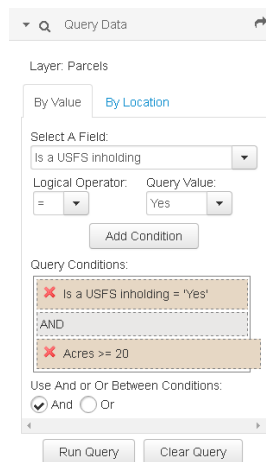
Parcel Identifier	Acres	Acres Sustainable Forests and Working Lands Combined Resource Goal Priorities on Parcel	Acres Lands That Support Wildlife Combined Resource Goal Priorities on Parcel	Acres Increase Recreation Combined Resource Goal Priorities on Parcel	Acres Combined Overall Resource Goal Priorities on Parcel
311621220050	127.3	11.8157545426	74.3057701989	12.3101375779	8.231477537
311621000000	551.5	0	190.25234983	104.627672319	10.675284469
301627000000	634.2	613.153144298	569.783655004	1.26030994514	453.242053017

1 - 100 of 2190 results

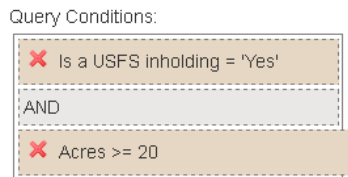
- If you click on an individual record in your table the map will zoom to that parcel.
- You can either export this data as an excel/csv or create a pdf report for the queried parcels.



- Add condition to query
 - Perform the same steps as above for any additional conditions you would like to include.



- Make sure and click “Add Condition” after you have set up your condition. Once this is done a second condition will appear in your query conditions.



- Follow the same directions as above to run the query.
- Query by Location
 - To begin choose how you would like to select your features. You can do this by choosing the point, line, or polygon option and define the buffer of that geometry. Once you have chosen both the buffer and the geometry


you will draw on the map defining the point, line, or area that you would like to query.

- Select Run Query
- A table will open at the bottom of the viewer showing you the parcels that fit your query.
- You can either export this data as an excel/csv or create a pdf report for the queried parcels.

- Example of Parcel Profile Report
 - There are a number of features that this report highlights.
 - On the top section of the report you can find information on the Parcel owner, acreage, Parcel ID and address.
 - This report details how the parcel corresponds to each Goal including a acreage and percentage breakdown of the overall parcel acreage that aligns with the goals.

Upper Wenatchee Community Lands Plan

Parcel Report
June 6, 2016 Page 1 of 2




Parcel ID: 301627220100		Acres: 17.34	
Owner: TRINITY CONSERVANCY INC		Address: 3139 E LAKE SAMMAMISH SE	

Parcel Indicators			
Is a USFS inholding: Yes	Adjacent to existing conserved land: Yes		
In clear cut area: No	Parcel has stream frontage: No		
Within 1000 ft of a road: Yes	Parcel has high fire risk: No		
At least 1 acre flat land: Yes	Parcel along UCSRB priority stream: Yes		
Is developable: Yes	Parcel overlaps PHS habitat or species: Yes		
Is owned by Weyerhaeuser: No	Parcel has above avg. terrestrial resilience: No		
Single owner of min. 160 ac. contiguous land: No			

Overall Stacked Priorities	Acres	Percent	Present
Stacked Priorities	10.55	60.9%	Yes
Have Sustainable Forests and Working Lands	12.93	74.6%	Yes
Have Lands that Support Wildlife	15.79	91.1%	Yes
Increase Recreation	0.00	0.0%	No

Legend


Project Area Parcels



This report was created on June 6, 2016 using the Upper Wenatchee Community Lands Plan interactive mapping site. It is for informational purposes only. The providers of this report disclaim any and all warranties, express or implied, including fitness for a particular purpose or merchantability. Use and reliance on this report is at the sole risk of the party using same.
© 2016 The Trust for Public Land

Upper Wenatchee Community Lands Plan

Parcel Report
June 6, 2016 Page 2 of 2



Parcel ID: 301627220100		Acres: 17.34	
Owner: TRINITY CONSERVANCY INC		Address: 3139 E LAKE SAMMAMISH SE	

Goal 1: Have Sustainable Forests and Working Lands	Acres	Percent	Present
Mixed forest composition	8.16	47.1%	Yes
Areas least susceptible to insect outbreaks	0.37	2.1%	Yes
Forest resiliency and stronghold areas	10.33	59.6%	Yes
Lands most suitable for sustainably harvested timber	8.19	47.2%	Yes
New opportunities for agriculture	0.00	0.0%	No
Overall healthy forests weighted resource goal	12.93	74.6%	Yes

Goal 2: Have Lands that Protect Wildlife	Acres	Percent	Present
Important wildlife habitat	14.98	86.4%	Yes
Healthy riparian vegetation	8.61	49.6%	Yes
Lands that provide corridors for wildlife movement	4.55	26.2%	Yes
Lands with native terrestrial species	0.00	0.0%	No
Lands along cold water streams for fish species	0.00	0.0%	No
Wintering areas for game species	0.00	0.0%	No
Wetlands	0.00	0.0%	No
Large contiguous blocks of natural landcover	0.00	0.0%	No
Overall wildlife habitat weighted resource goal	15.79	91.1%	Yes

Goal 3: Increase Recreation	Acres	Percent	Present
Access and lands already used for motorized and non-motorized recreation	0.00	0.0%	No
Scenic views	0.00	0.0%	No
Access to streams and lakes for fishing, canoeing, gold panning and kayaking	0.00	0.0%	No
Bird watching areas	0.00	0.0%	No
Overall recreation weighted resource goal	0.00	0.0%	No

This report was created on June 6, 2016 using the Upper Wenatchee Community Lands Plan interactive mapping site. It is for informational purposes only. The providers of this report disclaim any and all warranties, express or implied, including fitness for a particular purpose or merchantability. Use and reliance on this report is at the sole risk of the party using same.
© 2016 The Trust for Public Land