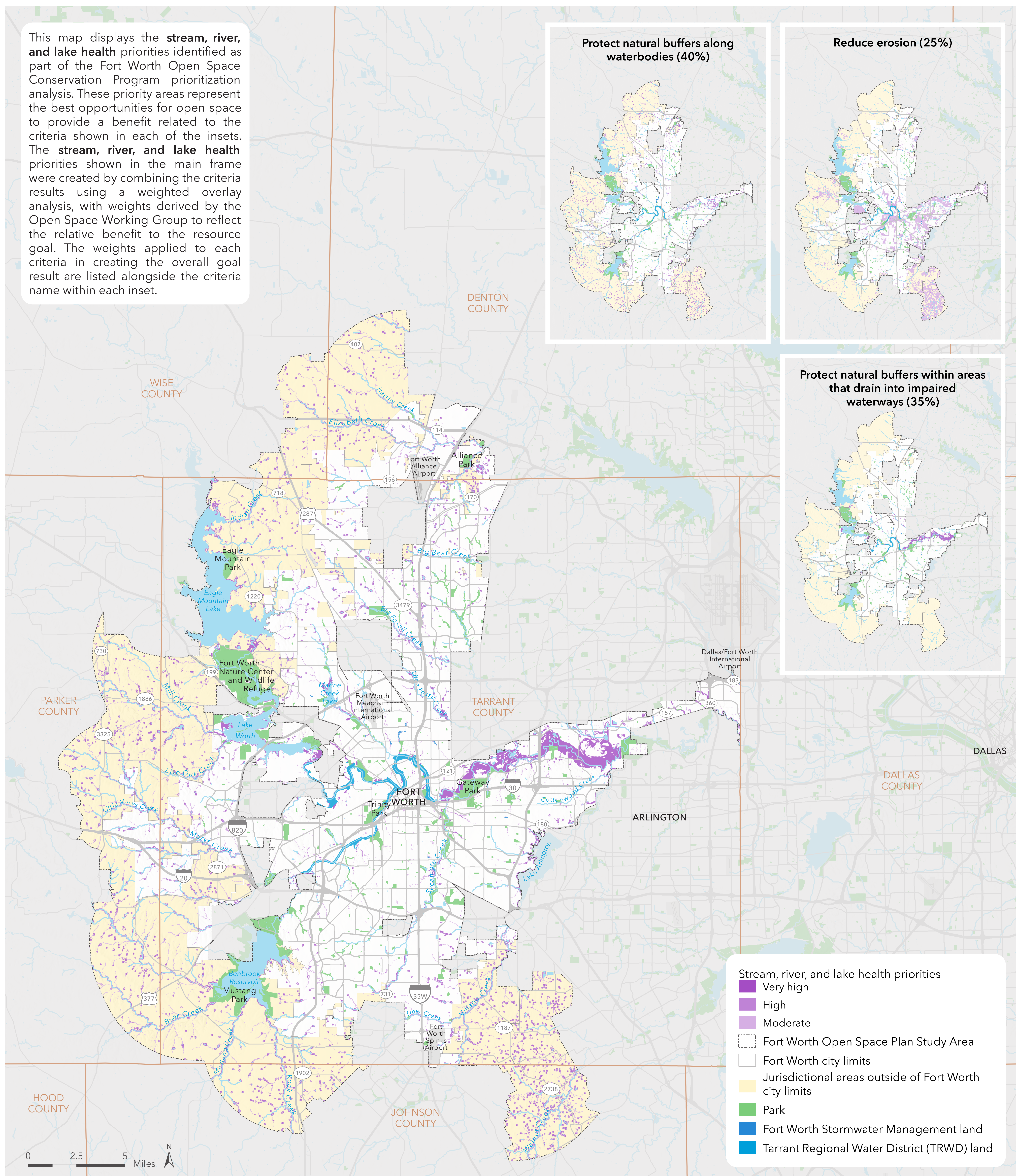
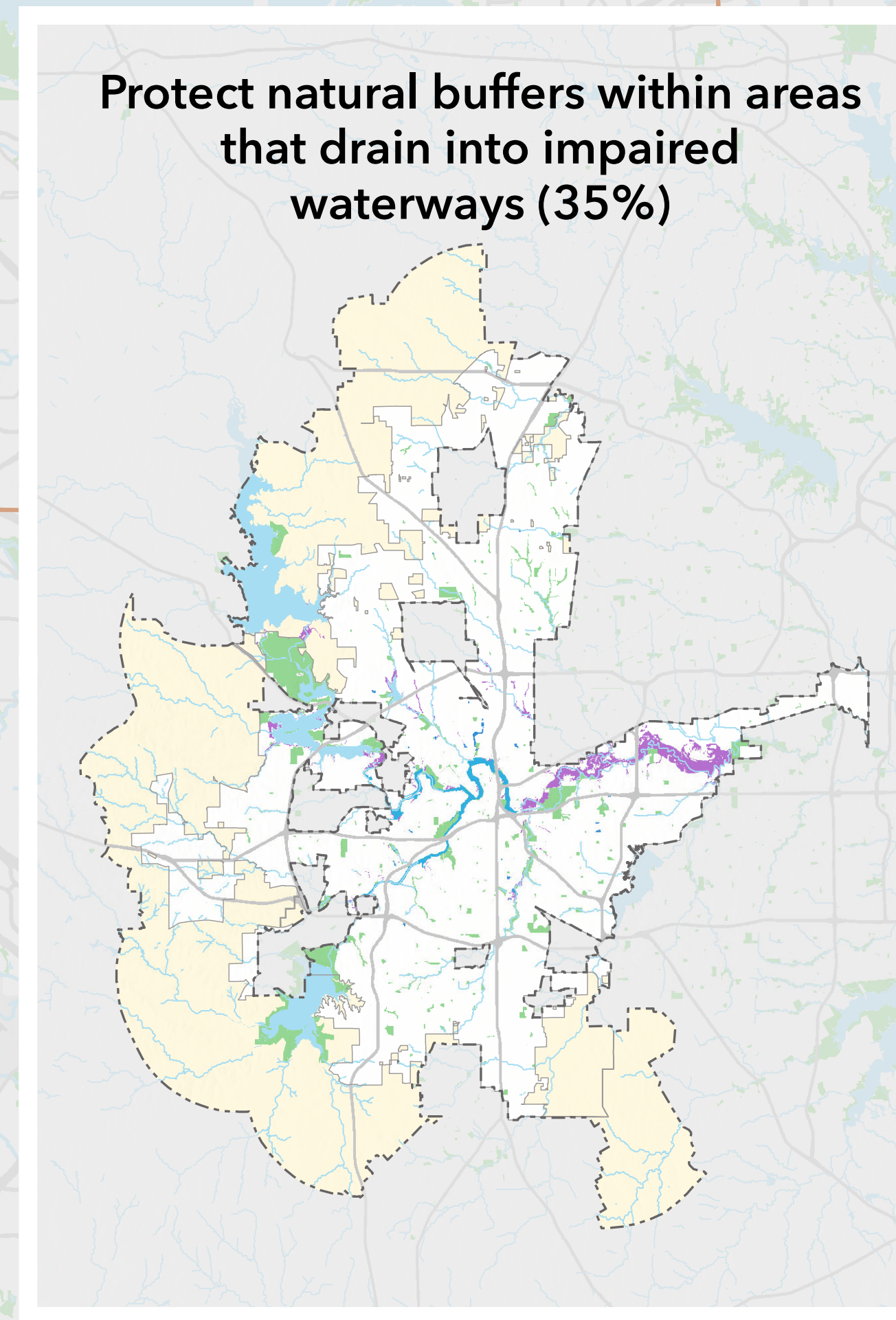
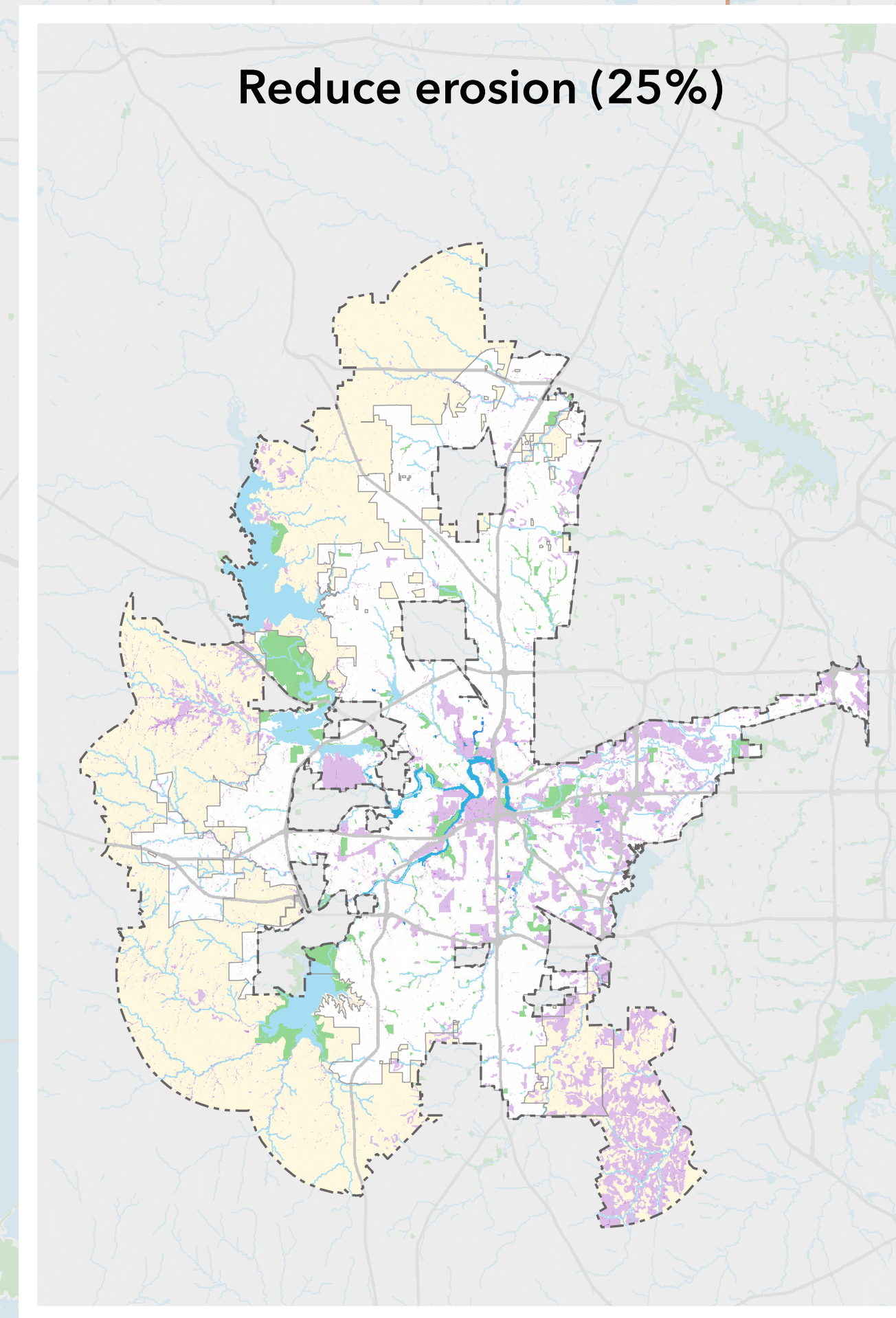
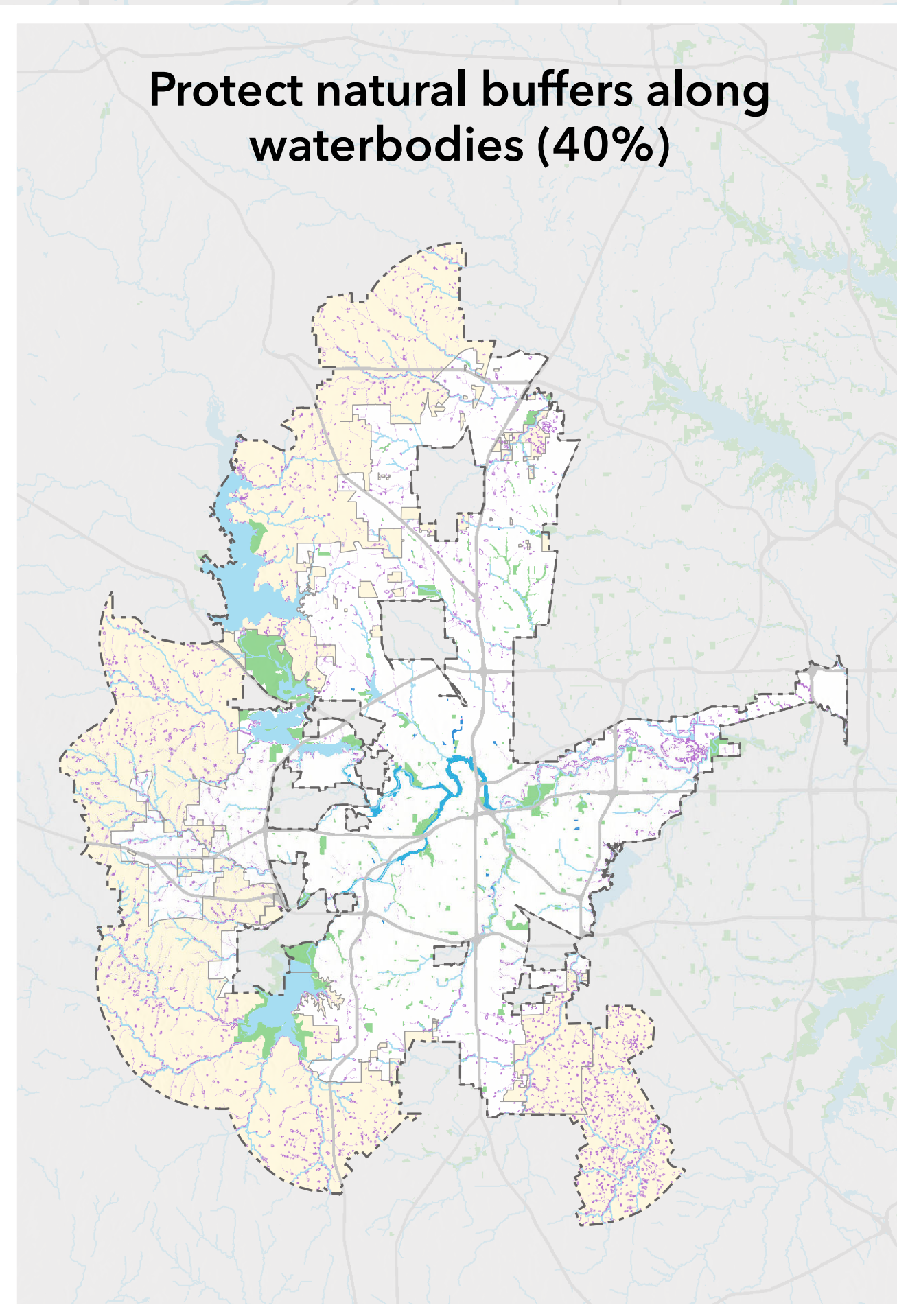


This map displays the **stream, river, and lake health** priorities identified as part of the Fort Worth Open Space Conservation Program prioritization analysis. These priority areas represent the best opportunities for open space to provide a benefit related to the criteria shown in each of the insets. The **stream, river, and lake health** priorities shown in the main frame were created by combining the criteria results using a weighted overlay analysis, with weights derived by the Open Space Working Group to reflect the relative benefit to the resource goal. The weights applied to each criteria in creating the overall goal result are listed alongside the criteria name within each inset.



Stream, river, and lake health

FORT WORTH OPEN SPACE CONSERVATION PROGRAM, TEXAS

May 27, 2021. Copyright © The Trust for Public Land. The Trust for Public Land and The Trust for Public Land logo are federally registered marks of The Trust for Public Land. Information on this map is provided for purposes of discussion and visualization only. www.tpl.org



THE
TRUST
**FOR
PUBLIC
LAND**