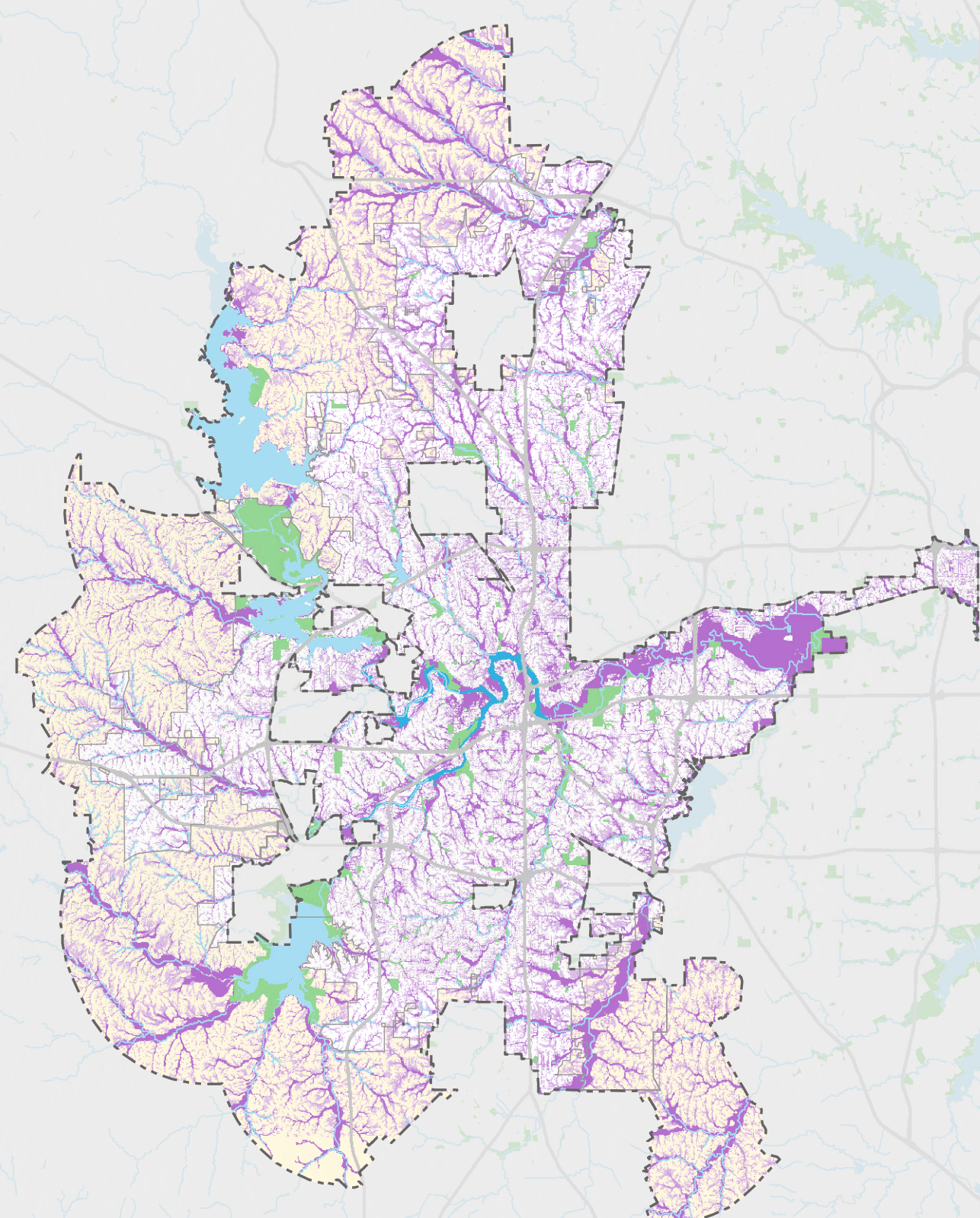
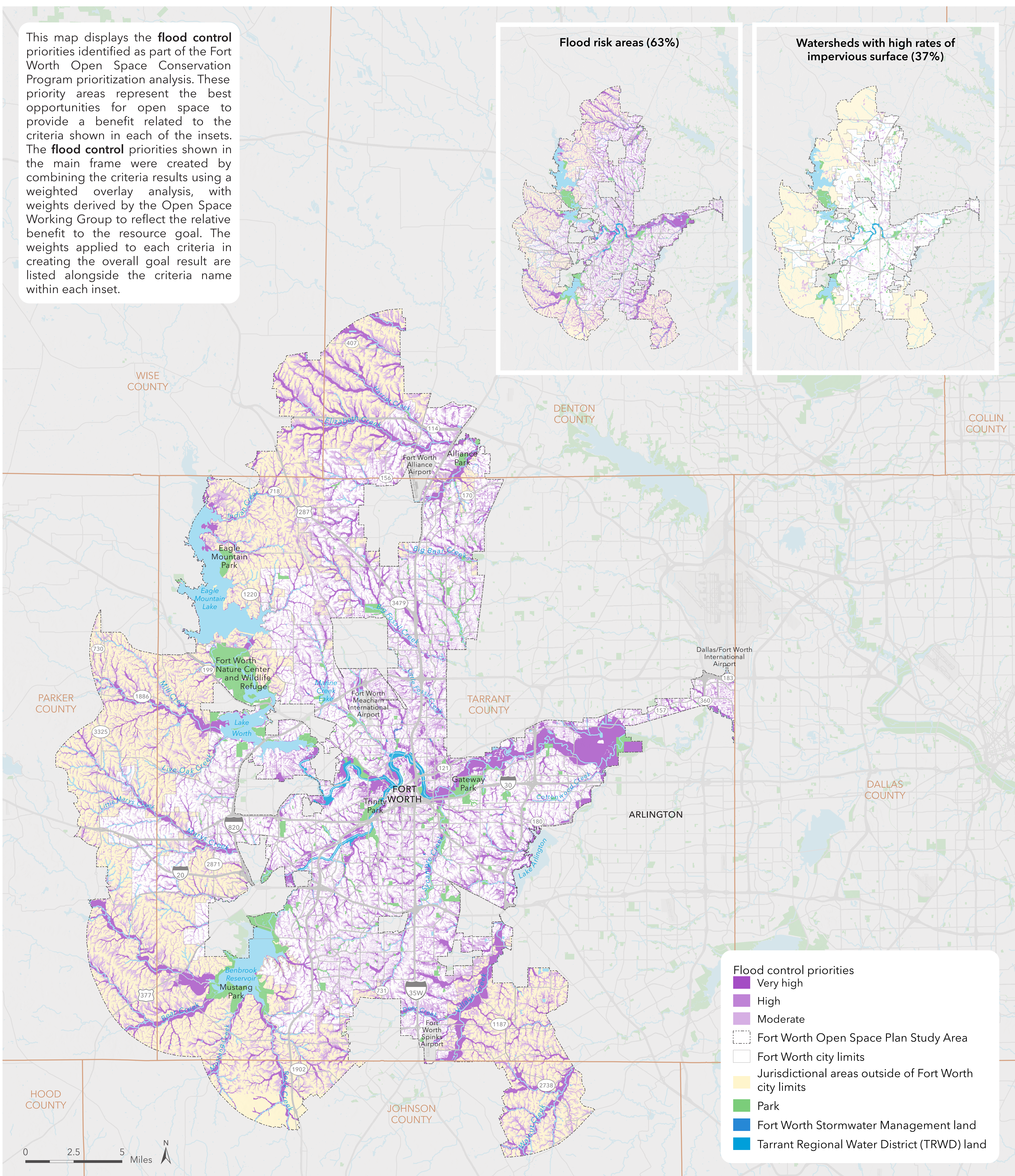
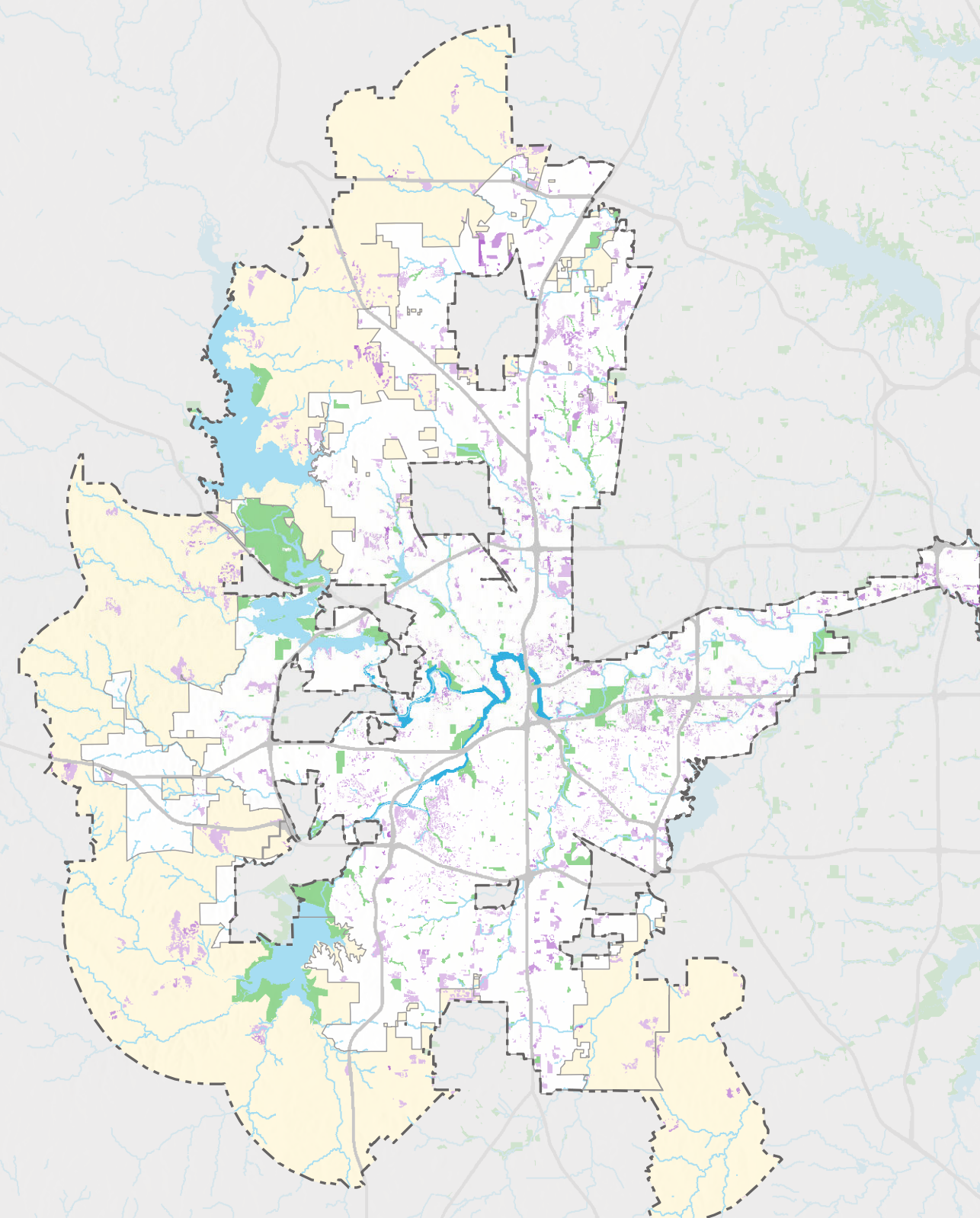


This map displays the **flood control** priorities identified as part of the Fort Worth Open Space Conservation Program prioritization analysis. These priority areas represent the best opportunities for open space to provide a benefit related to the criteria shown in each of the insets. The **flood control** priorities shown in the main frame were created by combining the criteria results using a weighted overlay analysis, with weights derived by the Open Space Working Group to reflect the relative benefit to the resource goal. The weights applied to each criteria in creating the overall goal result are listed alongside the criteria name within each inset.

Flood risk areas (63%)



Watersheds with high rates of impervious surface (37%)



- Flood control priorities
- Very high
  - High
  - Moderate
- Fort Worth Open Space Plan Study Area
- Fort Worth city limits
- Jurisdictional areas outside of Fort Worth city limits
- Park
- Fort Worth Stormwater Management land
- Tarrant Regional Water District (TRWD) land

# Flood control

## FORT WORTH OPEN SPACE CONSERVATION PROGRAM, TEXAS

May 27, 2021. Copyright © The Trust for Public Land. The Trust for Public Land and The Trust for Public Land logo are federally registered marks of The Trust for Public Land. Information on this map is provided for purposes of discussion and visualization only. [www.tpl.org](http://www.tpl.org)

